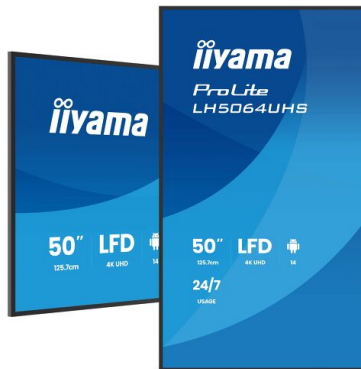


LFD - SIGNAGE DISPLAYS**INFORMATION**

50" 4K UHD Most powerful professional digital signage display with advanced control and connectivity options

The ProLite LH5064UHS-B1AG is a 50" 4K UHD digital signage powerhouse designed to elevate your business's visual communication. With Android 14 OS, [iiSignage²](#) (CMS), [iiControl](#) (DMS), and [iiShare](#) (Wireless Presentation), managing content is effortless. It's WiFi enabled for remote content delivery and offers reliable 24/7 operation. Perfect for retail, corporate, hospitality, or restaurant settings, this display ensures a captivating audience experience with its versatile design and high brightness.



Android OS

Thanks to Android OS, you can easily customize the display to your needs by installing applications directly to it.



Signal FailOver

FailOver is a feature which automatically detects input sources. When there is no signal on the default input it will automatically switch to the next available input. FailOver allows customers to prioritize a number of inputs (incl. Browser, Media Player and Custom) and ensures your content is always actively displayed, assuring active content at all times.

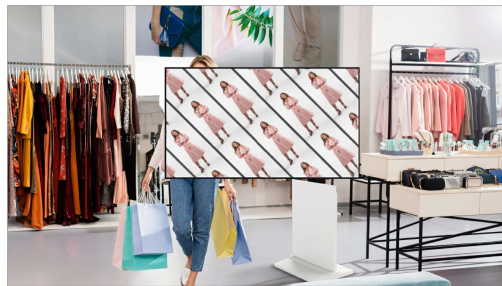
4 SIMPLE STEPS

TO REACH YOUR AUDIENCE



iiSignage²

iiSignage² is our digital signage content management platform to easily show and control your content and to manage your displays in a secure way. The Content Management System (CMS) gives you total control of your messaging and advertising remotely and safely.



Flexible Orientation

With the option to switch between landscape and portrait mode, these displays let you get creative with any space. Whether it's messaging, ads, videos, or safety info, you can tailor your content to grab attention exactly how you want.

SPECIFICATION

01 DISPLAY CHARACTERISTICS

Design	Thin bezel
Diagonal	50", 125.8cm
Panel	IPS, Anti-Glare coated glass, matte finish
Native resolution	3840 x 2160 @60Hz (8.3 MegaPixels 4K UHD)
Aspect ratio	16:9
Panel brightness	500 cd/m ²
Static contrast	1200:1
Response time (GTG)	6.5ms
Viewing zone	horizontal/vertical: 178°/178°, right/left: 89°/89°, up/down: 89°/89°
Colour support	1.07G (8 Bits+FRC)
Horizontal Sync	57 - 62kHz
Viewable area W x H	1096 x 616.4mm, 43.2 x 24.3"
Bezel width (sides, top, bottom)	13.8mm, 13.8mm, 13.8mm
Pixel pitch	0.285mm
Bezel colour and finish	black, matte

02 INTERFACES / CONNECTORS / CONTROLS

Digital signal input	HDMI x2 (v.2.0, max. 3840x2160 @60Hz) USB-C x1 (DP Alt, 15W PD)
Monitor control input	RS-232c x1 (2.5mm sub-mini jack) RJ45 (LAN) x1 IR x1 (3.5mm stereo mini)
Audio output	Mini jack x1 (3.5mm) Speakers 2 x 10W
Monitor control output	RS-232c x1 (2.5mm) IR loop through x1 (3.5mm)
HDCP	v.1.4 & 2.0
USB ports	x2 (v.2.0)

03 FEATURES

Integrated software	Android 14 OS, iiSignage ² , iiControl, iiShare, FailOver, TeamViewer, PDF & Media Player, iiBrowser, File manager
WiFi	yes (Built-in, 2.4G/ 5G)
Hardware	CPU: A73*4, GPU: G52 MC1, RAM: 4GB, ROM: 32GB
Extra	Wall mounting kit included (VESA 400x300mm)
Max. non-stop operating time	24/7
Anti image retention	yes
Media playback	yes

Housing (bezel)	metal
------------------------	-------

04 GENERAL

OSD languages	EN, DE, FR, ES, IT, CN, RU, JP, CZ, NL, PL, SV, FI, DA, NB
Control buttons	Power Indicator, Power button, Remote Sensor
User controls	network (status, Wifi, ethernet, hotspot), picture (brightness, contrast, sharpness, black level, tint, colour, noise reduction, gamma selection, colour temp., colour control, picture reset), audio (balance, treble, bass, volume, audio out, max. volume, min. volume, mute, audio out sync, speaker setting, audio reset), OSD setting (OSD timeout, OSD H-Position, OSD V-position, OSD transparency, information OSD), general (logo and animation, wallpaper, no signal image, schedule, off timer), screen (zoom mode, custom zoom, system rotation, screen reset), device (power on status, RS232 routing, IR control, power saving, panel saving, monitor info, other), channel (boot on source, rename input channel, auto source switching, signal lost detection, HDMI version), system (language, system update, setting reset, factory reset, Android setting), admin (menu lock, meeting room, HDMI CEC, screen share, Miracast standby, log export)
Plug&Play	DDC2B

05 MECHANICAL

Orientation	landscape, portrait
Fanless design	yes
VESA mounting	400 x 300mm
Operation temperature range	0°C - 40°C
Storage temperature range	- 20°C - 60°C
MTBF	50.000 hours (excluding backlight)

06 ACCESSORIES INCLUDED

Cables	power, HDMI, RS-232c
Guides	quick start guide, safety guide
Other	Wall mount bracket, Wall mount guide, Screws, Screw anchors, Stickers for screw holes
Remote control	yes (batteries included)

07 POWER MANAGEMENT

Power supply unit	internal
Power supply	AC 100 - 240V, 50/60Hz
Power usage	123W typical, 0.5W stand by, 0.3W off mode

08 SUSTAINABILITY

Regulations	CE, TÜV-Bauart, EAC, RoHS support, ErP, WEEE, REACH (UKCA, RoHS2.0, PFOS)
Energy efficiency class (Regulation (EU) 2017/1369)	G

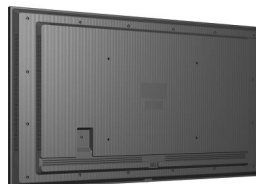
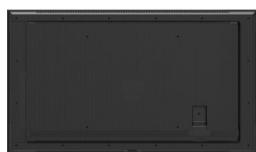
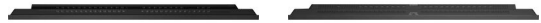
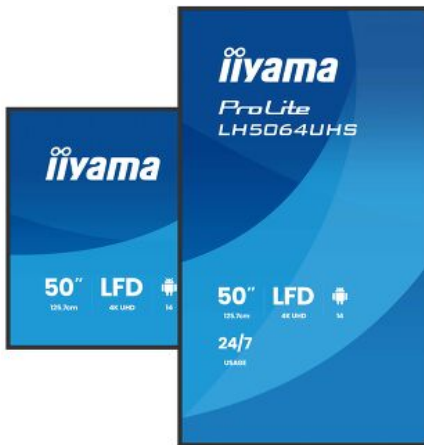
Product dimensions 1124.6 x 644.8 x 68.5mm
W x H x D

Box dimensions W x 1250 x 760 x 144mm
H x D

Weight (without box) 10.4kg

Weight (with box) 14.8kg

EAN code 4948570125340





All trademarks and registered trademarks acknowledged. E & O E. Specification subject to change without notice. All LCD's comply with ISO-9241-307:2008 in connection with pixel defects. © IIYAMA CORPORATION. ALL RIGHTS RESERVED