

## 55" All-in-One PCAP Interactive Display inspired by technology and designed for creative spaces and sharing

Enjoy an all-in-one interactive display that combines the best in PCAP Touchscreen technology, offering the versatility and freedom of Android OS, easily customized to your needs by installing applications directly to it. Offering a powerful, yet flexible user experience, fostering creative communication with the benefits of a secure and controllable Touchscreen.



The refined edge-to-edge glass design of the TF5539AS-B1AG lends itself for integration into a large variety of environments where polished design and functionality are needed, like Huddle spaces in the modern office space, Retail shops and Kiosks.

The on-board [iiSignage<sup>2</sup> CMS](#) (Content Management System) gives you total control of your messaging and advertising, remotely and safely. The [EShare App](#) enables you to bring effortless ideation and efficient collaboration in your enterprise or school. You can start sharing wireless easier than ever before.

For ease of integration, the TF5539AS-B1AG can be equipped with optional external mounting brackets ([OMK4-2](#)).



## Android OS

Thanks to Android OS, you can easily customize the display to your needs by installing applications directly to it.

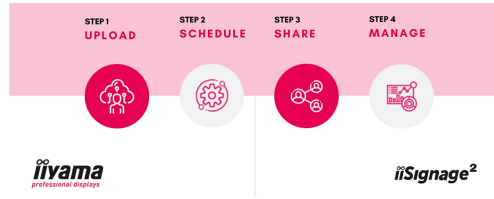


## Signal FailOver

FailOver is a feature which automatically detects input sources. When there is no signal on the default input it will automatically switch to the next available input. FailOver allows customers to prioritize a number of inputs (incl. Browser, Media Player and Custom) and ensures your content is always actively displayed, assuring active content at all times.

## 4 SIMPLE STEPS

TO REACH YOUR AUDIENCE



## iiSignage²

iiSignage² is our digital signage content management platform to easily show and control your content and to manage your displays in a secure way. The Content Management System (CMS) gives you total control of your messaging and advertising remotely and safely.



## Touch Through-Glass

This through glass touch screen works right through glass and can turn glass surfaces into an interactive touch screen display. Use it on storefront windows, real estate office, in-store for POS or restaurants.

## SPECIFICATION

### 01 DISPLAY CHARACTERISTICS

<b>Design</b>	Edge to edge glass, Open Frame
<b>Diagonal</b>	54.6", 139cm
<b>Panel</b>	IPS LED, AG coated glass, matte finish
<b>Native resolution</b>	3840 x 2160 @60Hz (8.3 megapixel 4K UHD)
<b>Aspect ratio</b>	16:9
<b>Panel brightness</b>	500 cd/m <sup>2</sup>
<b>Brightness</b>	435 cd/m <sup>2</sup> with touch
<b>Light transmittance</b>	87%
<b>Static contrast</b>	1200:1
<b>Response time (GTG)</b>	8ms
<b>Viewing zone</b>	horizontal/vertical: 178°/178°, right/left: 89°/89°, up/down: 89°/89°
<b>Colour support</b>	1.07G (8 Bits+FRC) (72% NTSC)
<b>Horizontal Sync</b>	28 - 160kHz
<b>Viewable area W x H</b>	1209.6 x 680.4mm, 47.6 x 26.8"
<b>Bezel width (sides, top, bottom)</b>	30mm, 30mm, 30mm
<b>Pixel pitch</b>	0.315mm
<b>Bezel colour and finish</b>	black, matte

### 02 TOUCH

<b>Touch technology</b>	bonded PCAP
<b>Touch points</b>	40
<b>Touch accuracy</b>	+ - 2.5mm
<b>Touch method</b>	stylus, finger, glove (latex)
<b>Touch interface</b>	USB
<b>Supported operating systems</b>	All iiyama monitors are Plug & Play and compatible with Windows and Linux. For details regarding the supported OS for the touch models, please refer to the driver instruction file available in the downloads section.
<b>Through-Glass</b>	6mm
<b>Palm rejection</b>	yes

### 03 INTERFACES / CONNECTORS / CONTROLS

<b>Digital signal input</b>	HDMI x2 (2.0, max. 3840x2160 @60Hz) DisplayPort x1 (1.2, max. 3840x2160 @60Hz)
<b>Monitor control input</b>	RS-232c x1 (Get/Set Command) RJ45 (LAN) x1 (Control and Internet)
<b>Audio output</b>	Mini jack x1 Speakers 2 x 10W
<b>HDCP</b>	2.2

USB ports x2 (2.0 x2 (Type A))

## 04 FEATURES

<b>Integrated software</b>	Android 11 OS, iiSignage <sup>2</sup> , EShare, FailOver
<b>Hardware</b>	CPU: A73*4+A53*4, GPU: G52 MP8, RAM: 4GB, ROM: 32GB
<b>Extra</b>	handles, Touch Through-Glass
<b>Kiosk mode</b>	yes
<b>Max. non-stop operating time</b>	24/7
<b>Anti image retention</b>	yes
<b>Glass thickness</b>	4mm
<b>Glass hardness</b>	3H
<b>60950 Ball drop test</b>	yes
<b>Water and dust protection</b>	IP65 (front)
<b>Housing (bezel)</b>	metal
<b>OSD key lock</b>	yes
<b>Remote control lock</b>	yes

## 05 GENERAL

<b>OSD languages</b>	EN, DE, FR, ES, IT, RU, CZ, NL, PL, SV, FI, DA, NB
<b>Control buttons</b>	Power
<b>User controls</b>	picture (brightness, contrast, sharpness, back level, tint, colour, noise reduction, gamma selection, low blue light, colour temp., colour control, overscan, picture reset), screen (zoom mode, custom zoom, screen reset), audio (balance, treble, bass, volume, audio out (line out), max. volume, min. volume, mute, audio reset, audio out sync, speaker setting), configuration 1 (Android launcher, switch on state, Touch lock, Touch mode, mouse mode, panel saving, RS232 routing, boot on source, WOL, conf.1 reset, factory reset), configuration 2 (OSD timeout, OSD H position, OSD V position, system rotation, info OSD, logo and animation, logo setting, animation setting, monitor ID, monitor info, HDMI version, conf. 2 reset), advanced options (kiosk mode, side bar, no signal image, motorized stand, IR control, power LED light, fan, off timer, schedule, HDMI with one wire, HDMI with one wire off, failover, language, OSD transparency, power saving, advanced options reset)
<b>Plug&amp;Play</b>	DDC2B

## 06 MECHANICAL

<b>Orientation</b>	landscape, portrait, face-up
<b>VESA mounting</b>	400 x 400mm
<b>Mini PC mount</b>	VESA 100 x 100, NUC INTEL
<b>Operation temperature range</b>	0°C - 40°C
<b>Storage temperature range</b>	- 20°C - 60°C
<b>MTBF</b>	50000 hours (excluding backlight)

## 07 ACCESSORIES INCLUDED

<b>Cables</b>	power (1.8m), USB (1.8m), HDMI (1.8m), DP (1.8m)
<b>Guides</b>	quick start guide, safety guide
<b>Cable cover</b>	yes
<b>Remote control</b>	yes (batteries included)

## 08 POWER MANAGEMENT

<b>Power supply unit</b>	internal
<b>Power supply</b>	AC 100 - 240V, 50/60Hz
<b>Power usage</b>	139W typical, 0.5W stand by, 0.3W off mode

## 09 SUSTAINABILITY

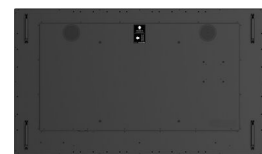
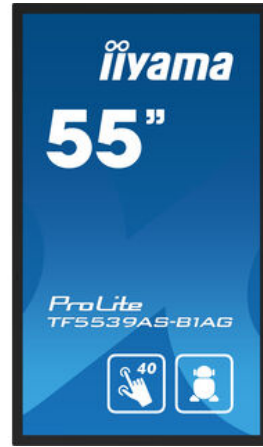
<b>Regulations</b>	CB, CE, TÜV-Bauart, EAC, RoHS support, ErP, WEEE, REACH, UKCA, cTUVus
<b>REACH SVHC</b>	above 0.1%: Lead

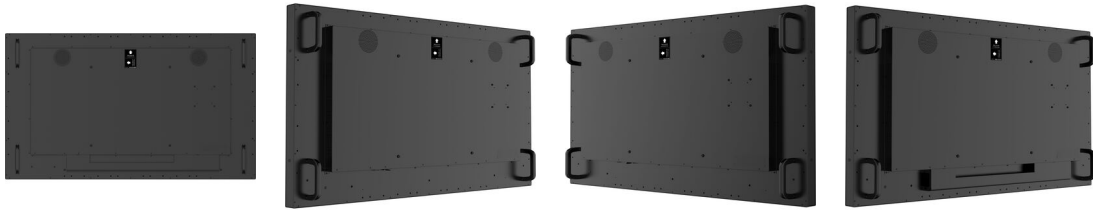
## 10 DIMENSIONS / WEIGHT

<b>Product dimensions W x H x D</b>	1274 x 744.8 x 65.2mm
<b>Box dimensions W x H x D</b>	1428 x 894 x 185mm
<b>Weight (without box)</b>	39.6kg
<b>Weight (with box)</b>	47.2kg
<b>EAN code</b>	4948570123896

## 11 COMPATIBLE ACCESSORIES

**Mounts / Stands /  
Brackets** [OMK4-2](#), [MD-WLIFT2031-W1](#), [MD-CAR2031-B1](#)





All trademarks and registered trademarks acknowledged. E & O E. Specification subject to change without notice. All LCD's comply with ISO-9241-307:2008 in connection with pixel defects. © **IYAMA CORPORATION. ALL RIGHTS RESERVED**