

INFORMATION

86" Google EDLA Certified Interactive display for seamless integration and collaboration in education and enterprise

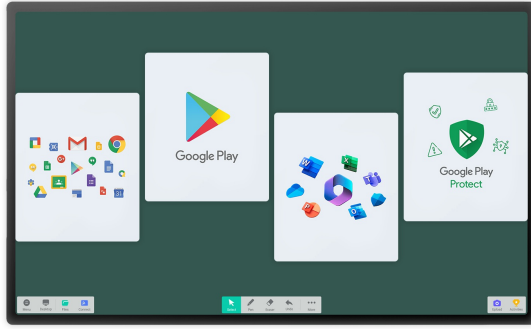
The TE8614MIS-B2AG is a visionary 4K UHD [Google EDLA Certified](#) interactive display that sets a new standard for ingenuity and performance. Crafted with precision, it features a Zero Airgap LCD screen that eradicates parallax, alongside the accurate PureTouch-IR+ with Palm Rejection, ensuring seamless interaction. Powered by iiWare 12E with Android 13 and equipped with WiFi connectivity, it effortlessly integrates into your ecosystem, supported by the iiyama (DMS) Device management platform.



Experience unparalleled wireless sharing capabilities with the intuitive iiyama Share and [EShare](#) app, facilitating seamless brainstorming and effective collaboration within your enterprise or educational institution.

With its innovative 4K Interface and [customizable User Profiles](#), the TE8614MIS-B2AG offers a personalized experience, granting easy access to bespoke applications and Cloud Drives. Adapted to thrive in bustling hybrid environments, it becomes a tailored solution for diverse user needs, revolutionizing collaboration, communication, and engagement.

Transforming modern workplaces, educational realms, and dynamic meeting spaces, this display emerges as an essential cornerstone, nurturing progress and connectivity beyond boundaries.



Google EDLA Certified

Google Enterprise Device License Agreement allows Google apps, accounts, files, and collaborative tools to be easily accessed directly from the Google EDLA certified iiyama displays, offering seamless integration with the Google ecosystem and the entire Microsoft 365 suite for enhanced user experience, productivity, and collaboration in all environments, especially the education and enterprise sectors alike.



PURETOUCH-IR+

The state-of-the-art PureTouch-IR+ technology ensures accurate and precise touch responses, enabling effortless interaction and annotation.



iiyama DMS

iiyama DMS provides organizations with a convenient and fast unified management solution for terminal equipment, builds an efficient and real-time equipment management system, helps digitize the campus/office estate environment and makes device management ultra convenient. iiyama DMS is committed to maintaining compliance with GDPR.



iiWare 12E

Empower your presentations with iiWare 12E, featuring Note, Browser, Cloud Drive via an intuitive and user-friendly software that allows you to effortlessly manage, customize, and access various applications with ease.

SPECIFICATION

01 DISPLAY CHARACTERISTICS

Design	Thin bezel
Diagonal	85.6", 217.4cm
Panel	VA, haze 25%
Touch Glass	Anti-Gloss treatment, Anti-Glare glass, Matt polished surface, Ultra smooth writing, Zero Air-Gap
Native resolution	3840 x 2160 (8.3 megapixel 4K UHD)
Aspect ratio	16:9
Panel brightness	435 cd/m ²
Light transmittance	92%
Static contrast	4000:1
Dynamic contrast	5000:1
Response time (GTG)	6.5ms
Viewing zone	horizontal/vertical: 178°/178°, right/left: 89°/89°, up/down: 89°/89°
Colour support	1.07B 10bit (8bit + Hi-FRC) (NTSC 72%)
Horizontal Sync	30 - 135kHz
Viewable area W x H	1895 x 1066mm, 74.6 x 42"
Bezel width (sides, top, bottom)	16.5mm, 16.5mm, 41mm
Pixel pitch	0.494mm
Bezel colour and finish	black, matte

02 TOUCH

Touch technology	PureTouch-IR ⁺
Touch points	50, 10pt writing (HID, only with supported OS, 40pt Touch with Android)
Touch accuracy	+ - 1mm
Touch method	stylus, finger, glove (Passive pen, Opaque objects)
Touch interface	USB
Supported operating systems	All iiyama monitors are Plug & Play and compatible with Windows and Linux. For details regarding the supported OS for the touch models, please refer to the driver instruction file available in the downloads section.
Palm rejection	yes

03 INTERFACES / CONNECTORS / CONTROLS

Digital signal input	HDMI x4 (2.0, max. 3840x2160 @60Hz, YUV420/ YUV444/ RGB444) DisplayPort x1 (2.1, max. 3840x2160 @30Hz) USB-C x2 (v.3.2 (Gen 1, 5Gbit), 3840x2160 @60Hz, RGB444 DP 1.2 Alt mode, Touch, 1x front: 100W PD , 1x back: 15W PD)
Audio input	Mini jack x1
Monitor control input	RS-232c x1 (DSUB 9pin) RJ45 (LAN) x1 (LAN Control)

IR x1

Digital signal output	HDMI x1 (2.0, max. 3840x2160 @60Hz, MSD (Multi-Screen Display)) USB-C x1 (v.3.2 (Gen 1, 5Gbit), 3840x2160 @60Hz (DP 1.2 Alt mode, Touch, 5W PD, MSD (Multi-Screen Display))
Audio output	S/PDIF (Optical) x1 Mini jack x1 Speakers 2 x 18W (Facing up), 2x 8W (Front facing)
HDCP	HDMI: 2.3 + 1.4, DP: 2.3 + 1.3, USB-C: 2.3 + 1.3
USB ports	x6 (media playback / peripherals / storage – front side: 2x v.3.2 (Gen 1, 5Gbit), 1x USB-C v.3.2 (Gen 1, 5Gbit, 100W PD), back side: 2x v.3.2 (Gen 1, 5Gbit), 1x USB-C v.3.2 (Gen 1, 5Gbit, 15W PD))
RJ45 (LAN)	x2 (Auto switch for PC & Android, 1000MB)
Microphone	8-Array (8m voice pick-up, Front facing)

04 FEATURES

Integrated software	iiWare 12E (Android 13 OS) featuring iiyama DMS, Google EDLA, Note, web browser, file manager, cloud drives, WPS office, iiyama Share and EShare for wireless connection with Windows/iOS/Android devices
WiFi	yes (WiFi 6 Module OWM002 - Dual WiFi Bandwidth: 2.4GHz/5GHz, WiFi Standard: IEEE 802.11 a/b/g/n/ac/ax, Bluetooth Support: 2.1+EDR/ 3.0/ 4.x/ 5.0)
Hardware	CPU: Quad core A76+A55, GPU: Mali G610 MC4, RAM: 8GB, ROM: 64GB
Extra	WiFi 6 Module (OWM002), Slot for optional OPS Slot PC, 4x Touch pen (anti-bacterial coating)
Kiosk mode	yes
Max. non-stop operating time	24/7
Glass thickness	3mm
Glass hardness	7H
Housing (bezel)	metal
OSD key lock	yes

05 GENERAL

OSD languages	EN, DE, FR, ES, IT, RU, CZ, NL, PL, SV, FI, DA, NB
Control buttons	Power button, Power Indicator, Remote Sensor, Light Sensor, USB-C Connector (3.2)
User controls	general settings (input, volume, backlight), display settings (auto brightness, ECO, eye care, paper eye care, picture mode, brightness, contrast, saturation, sharpness, colour temp., advanced settings), audio settings (audio mode, volume, bass, treble, balance, mute), screen settings (pixel shift, auto light, , ECR), application settings (network & internet, apps, storage, personal, Google, advanced, administration, system, about)
Blue light reducer	yes
Plug&Play	DDC2B
Warranty	5 years (for details and eligible countries please check the Warranty section of our website)

06 MECHANICAL

Orientation	landscape
Fanless design	yes
VESA mounting	800 x 600mm

Operation temperature range	0°C - 40°C
Storage temperature range	- 20°C - 60°C
MTBF	50.000 hours (excluding backlight)

07 ACCESSORIES INCLUDED

Cables	power, USB, HDMI
Touch pen	x4 (Dual function tips, Anti-Bacterial)
Guides	quick start guide, safety guide
Other	WiFi 6 Module (OWM002), Mounting bracket for NUC, Mounting bracket for webcam
Remote control	yes (batteries included)

08 POWER MANAGEMENT

Power supply unit	internal
Power supply	AC 100 - 240V, 50/60Hz
Power usage	267W typical, 0.5W stand by, 0.3W off mode

09 SUSTAINABILITY

Regulations	CB, CE, TÜV-Bauart, EAC, RoHS support, ErP, WEEE, REACH (RoHS)
REACH SVHC	above 0.1%: Lead

10 DIMENSIONS / WEIGHT

Product dimensions W x H x D	1957 x 1171 x 86mm
Box dimensions W x H x D	2110 x 1291 x 225mm
Weight (without box)	63.6kg
Weight (with box)	80.2kg
EAN code	4948570124046



TE INTERACTIVE SERIES **iiyama**
TOUCH PENS WITH DUAL FUNCTION
TIPS AND ANTI-BACTERIAL COATING



x4

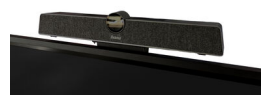
TE INTERACTIVE SERIES **iiyama**
MOUNTING BRACKET FOR NUC



TE INTERACTIVE SERIES **iiyama**
MOUNTING BRACKET FOR WEBCAM



TE INTERACTIVE SERIES **iiyama**
MOUNTING BRACKET FOR WEBCAM



All trademarks and registered trademarks acknowledged. E & O E. Specification subject to change without notice. All LCD's comply with ISO-9241-307:2008 in connection with pixel defects. © IYAMA CORPORATION. ALL RIGHTS RESERVED