

Universal wall mount, up to VESA 600x400mm, max. 125kg

With the easy and quick fixation system, this wall mount guarantees safe usage in environments like schools and other public utility buildings.

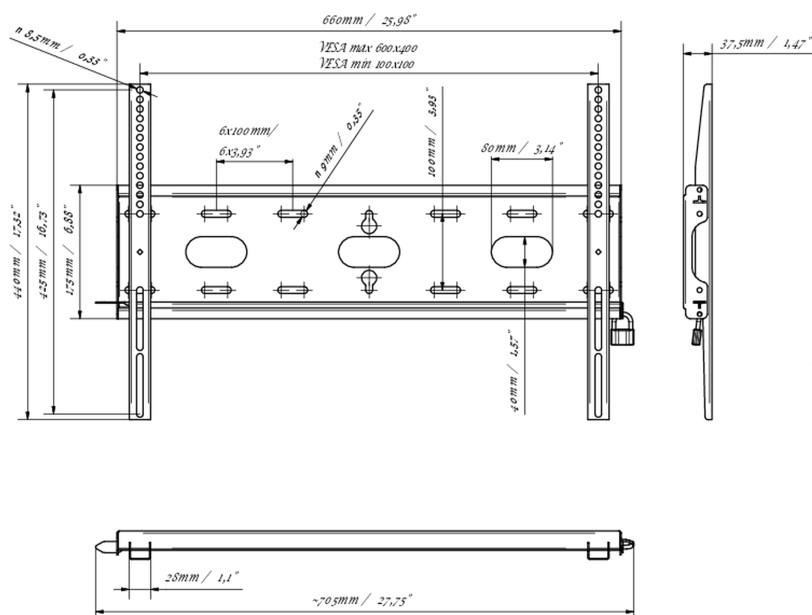
01 DEVICE

Type Wall Mount

02 TECHNICAL SPECIFICATION

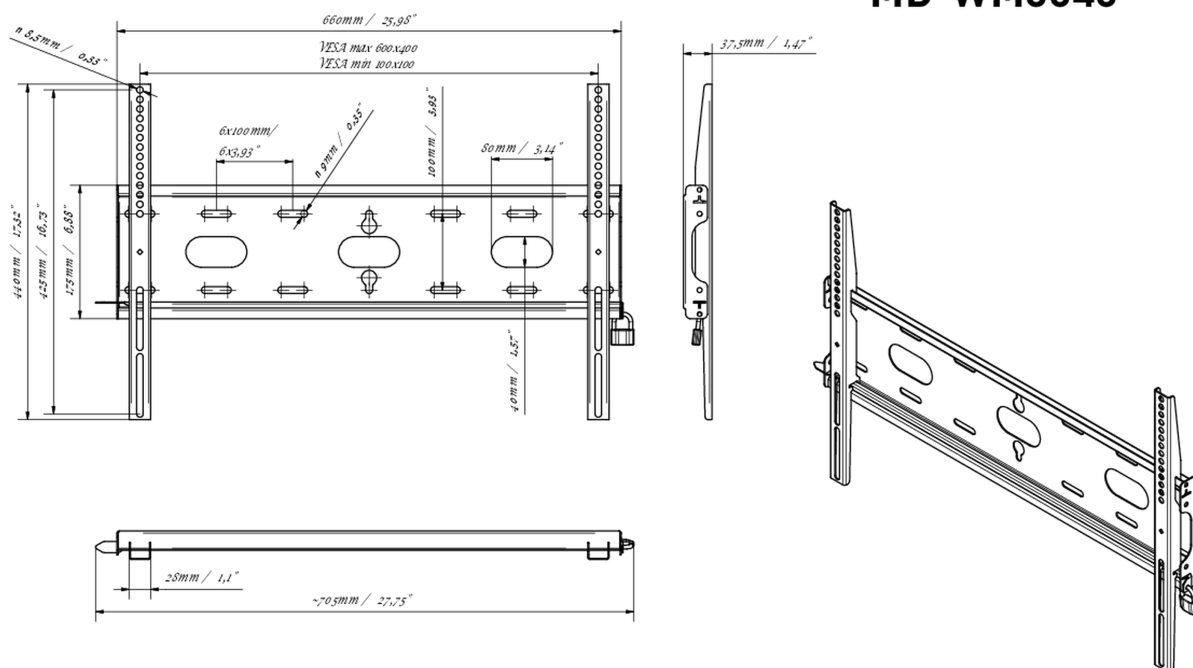
Max weight capacity	125kg / monitor
VESA minimum	100 x 100mm
VESA maximum	600 x 400mm

A technical line drawing of a metal bracket. The bracket has a long, narrow body with several oval-shaped mounting holes and rectangular slots. It is shown in a perspective view, angled upwards and to the right. The drawing includes detailed views of the mounting holes and slots, as well as a side view showing the bracket's profile and mounting points.



Product dimensions W x H x D	660 x 440 x 37.5mm
Box dimensions W x H x D	690 x 220 x 40mm
Weight (without box)	2.3kg
Weight (with box)	3kg
EAN code	5902841107106

MD-WM6040



All trademarks and registered trademarks acknowledged. E & O E. Specification subject to change without notice. All LCD's comply with ISO-9241-307:2008 in connection with pixel defects.

© IIYAMA CORPORATION. ALL RIGHTS RESERVED