

Universal wall mount, up to VESA 600x400mm, max. 125kg

With the easy and quick fixation system, this wall mount guarantees safe usage in environments like schools and other public utility buildings.

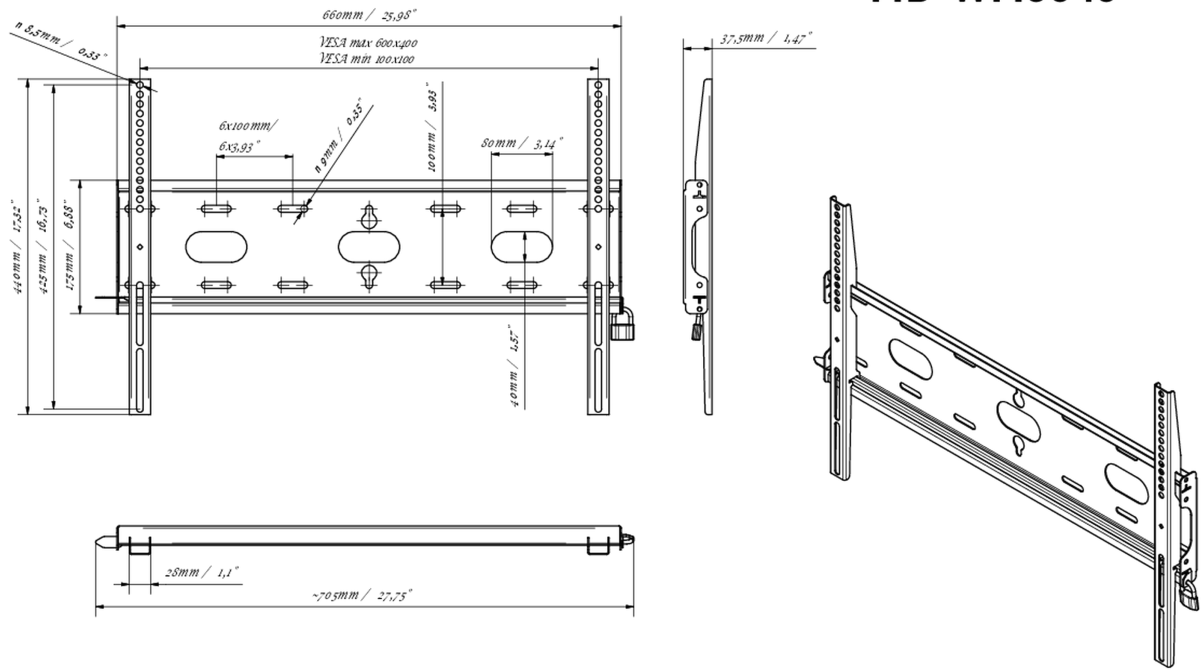
01 DEVICE

Type Wall Mount

02 TECHNICAL SPECIFICATION

Max weight capacity	125kg / monitor
VESA minimum	100 x 100mm
VESA maximum	600 x 400mm

MD-WM6040



03 DIMENSIONS / WEIGHT

Product dimensions W x H x D 660 x 440 x 37.5mm

Box dimensions W x H x D 690 x 220 x 40mm

Weight (without box) 2.3kg

Weight (with box) 3kg

EAN code 5902841107106

Technical drawing of the HD-WH940 display stand, showing dimensions in mm and inches.

Front View Dimensions:

- Top width: 660 mm / 25.98"
- Top width (VESA max 600x400): 600 mm / 23.62"
- Top width (VESA min 100x100): 100 mm / 3.94"
- Left height: 440 mm / 17.32"
- Left height (lower section): 425 mm / 16.73"
- Left height (lower section): 125 mm / 4.92"
- Right height: 100 mm / 3.94"
- Right height (lower section): 50 mm / 1.97"
- Right height (lower section): 40 mm / 1.57"
- Bottom width: ~705 mm / 27.75"
- Bottom width (lower section): 25 mm / 1.1"

Side View Dimensions:

- Depth: 37.5 mm / 1.47"

Perspective View:

- Shows the stand's profile and the VESA mounting plate.

© IIYAMA CORPORATION. ALL RIGHTS RESERVED