

Universal wall mount, up to VESA 400x400mm, max. 125kg

With the easy and quick fixation system, this wall mount guarantees safe usage in environments like schools and other public utility buildings.

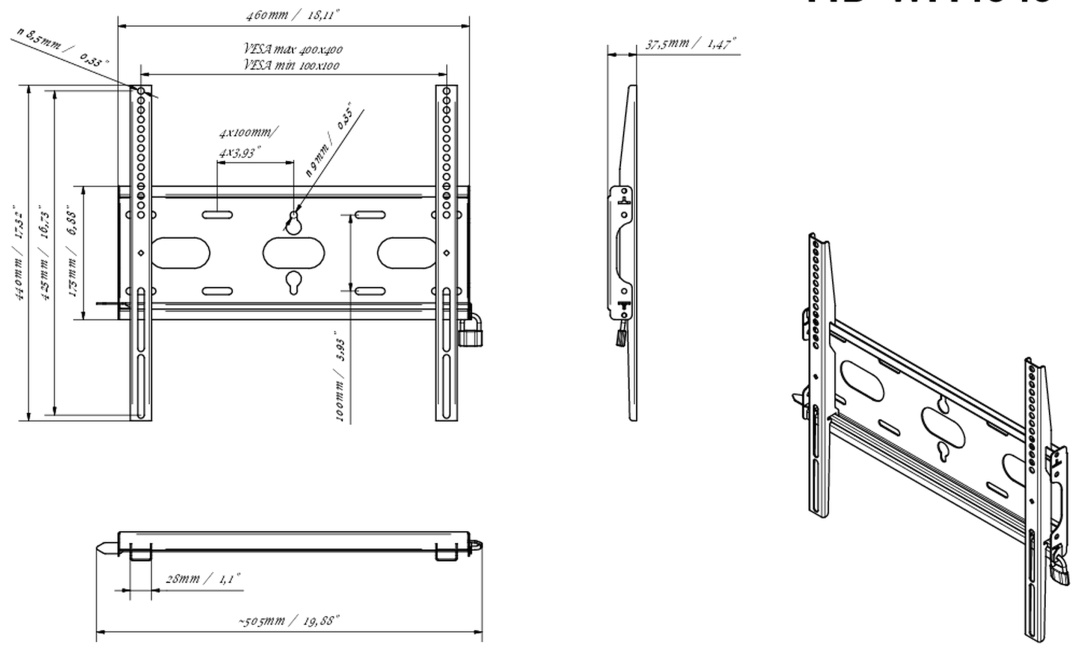
01 DEVICE

Type Wall Mount

02 TECHNICAL SPECIFICATION

Max weight capacity	125kg / monitor
VESA minimum	100 x 100mm
VESA maximum	400 x 400mm

MD-WM4040



03 DIMENSIONS / WEIGHT

Product dimensions W x H x D	460 x 440 x 37.5mm
Box dimensions W x H x D	205 x 505 x 38mm
Weight (without box)	1.8kg
Weight (with box)	2.5kg
EAN code	5902841107281

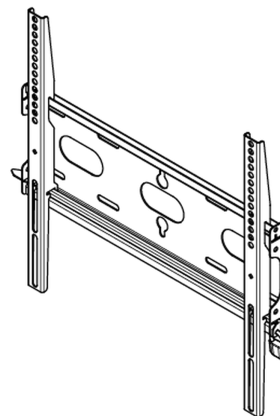
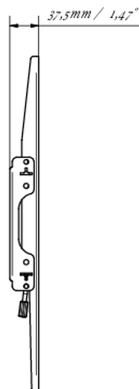
Technical drawing of the EGA 400x400 shower tray, showing dimensions in millimeters (mm) and degrees (°).

Top View Dimensions:

- Overall width: 460 mm / 18,11"
- Overall depth: 460 mm / 18,11"
- Left side depth: 440 mm / 17,32"
- Inner depth: 425 mm / 16,73"
- Right side depth: 440 mm / 17,32"
- Front edge depth: 125 mm / 6,88"
- Back edge depth: 100 mm / 3,93"
- Top edge depth: 100 mm / 3,93"
- Bottom edge depth: 100 mm / 3,93"
- Top edge angle: 89,58 mm / 0,55°
- Bottom edge angle: 89,58 mm / 0,55°
- Top edge angle: 4x100 mm / 4x3,93°
- Bottom edge angle: 4x100 mm / 4x3,93°

Side View Dimensions:

- Overall width: 460 mm / 18,11"
- Overall depth: 460 mm / 18,11"
- Left side depth: 440 mm / 17,32"
- Inner depth: 425 mm / 16,73"
- Right side depth: 440 mm / 17,32"
- Front edge depth: 125 mm / 6,88"
- Back edge depth: 100 mm / 3,93"
- Bottom edge depth: 100 mm / 3,93"
- Bottom edge angle: 89,58 mm / 0,55°
- Bottom edge angle: 4x100 mm / 4x3,93°



© IIYAMA CORPORATION. ALL RIGHTS RESERVED