

## Four points touch calibration SOP for Windows system

### 1. Introduction

This guide describes how to install and run the calibration utility to permit NextWindow touch screens to be installed successfully onto the display screen.

**NOTE:** This manual applies to Software Version 1.3.0 or later. The screenshots showing the version and/or the Firmware may be different to the software installed on the computer. The newer versions of the software operate in the same way as the software described in this manual.

### 2. Hardware and software preparation

- Computer
- Operating system: Windows XP with SP3 or Windows 7 with SP1 installed.
- NextWindow Software: CalibrationUtility 1.4.0.1 or later

### 3. Installing the Software

Install the software by dragging and dropping the supplied file onto the desktop or save it to the required location where the software is to be stored.

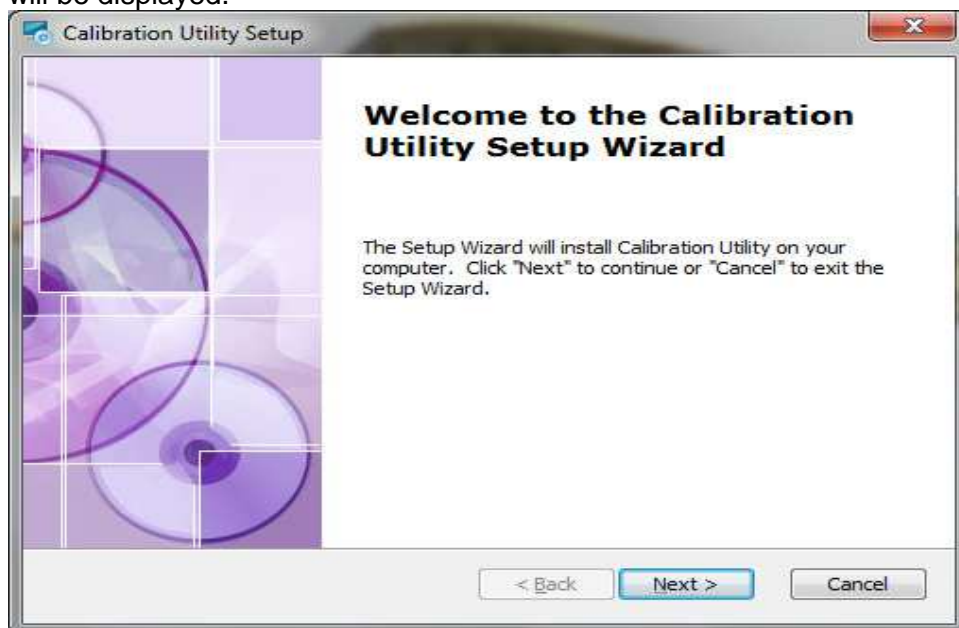
The revision status of the enclosed software is included as part of the filename.



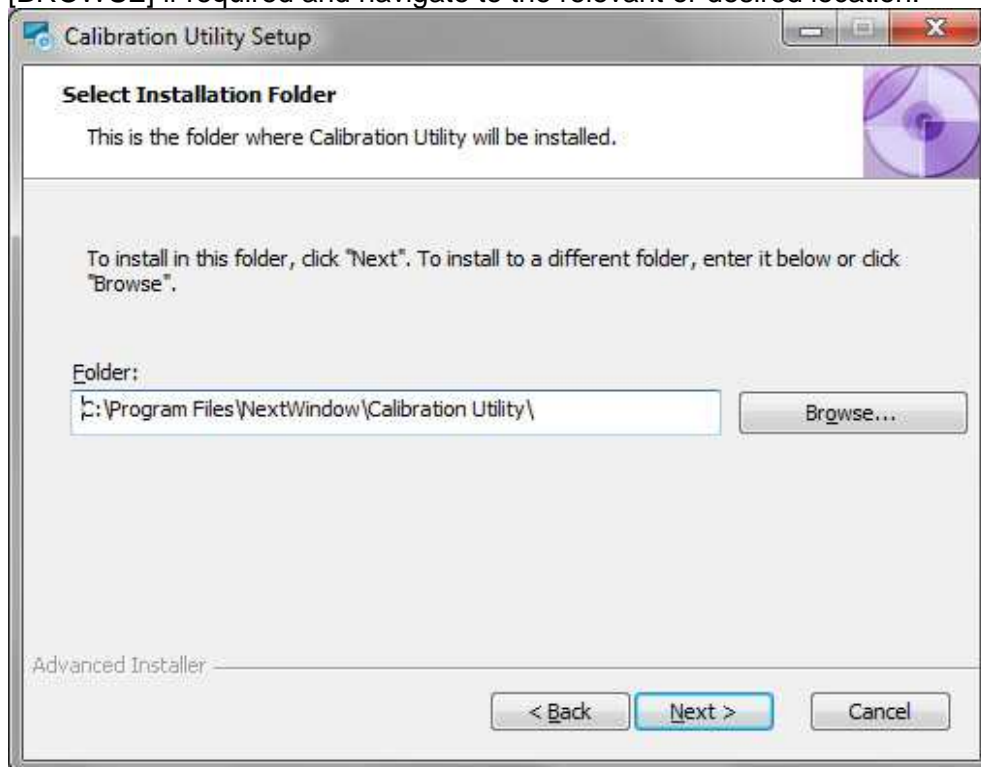
Figure1. Utility Software Desktop Icon

**NOTE:** The Icon shows the version of the software. This manual applies to Version 1.3.0 or later. The version number may be different from that shown.

1. Double click on the icon to commence the installation – the Utility Setup Wizard screen will be displayed.



2. Click [NEXT] to begin the installation.
3. The setup allows the option to install the software to a specified location– select [BROWSE] if required and navigate to the relevant or desired location.



4. Otherwise, click [NEXT] to begin the installation.
5. The license agreement window will be displayed – click the button next to the statement” I accept the terms in the License Agreement”

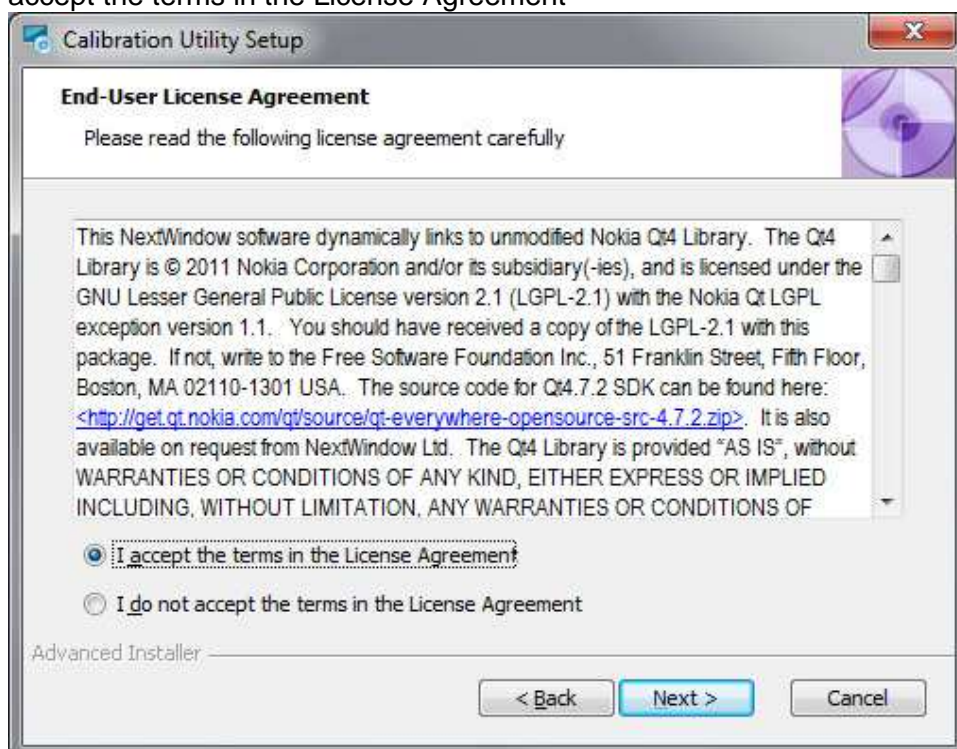


Figure 4. License Agreement

6. Click [NEXT] to continue installation of the software and the following screen will be displayed.

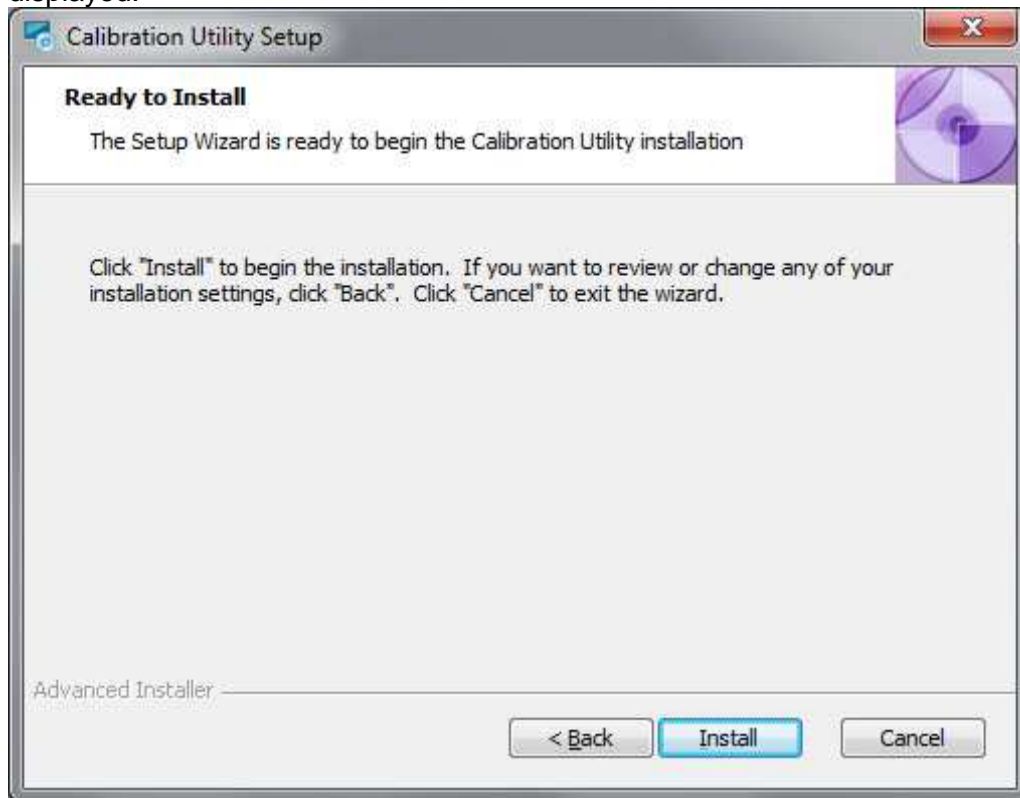


Figure 5. Preparing to Install the Software

7. Click [INSTALL] to install the software and the utility will report progress

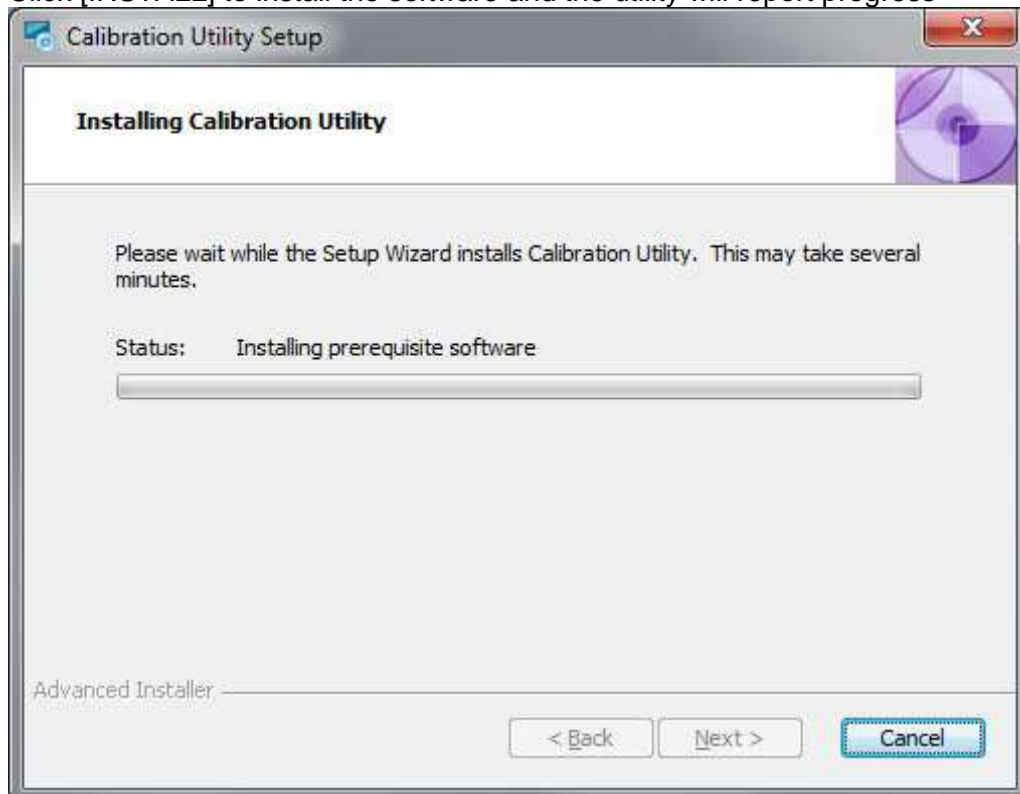


Figure 6. Setup Progress Report

8. The software will install and when the installation is complete, the following screen will be displayed.

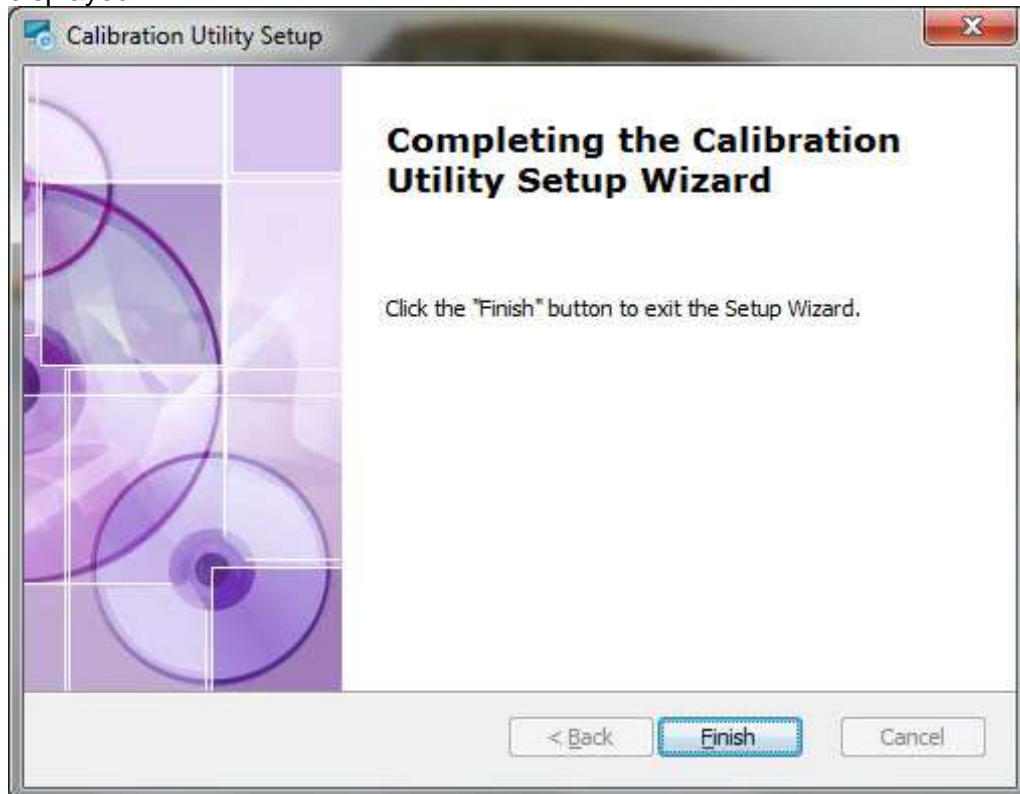


Figure 7. Setup Complete

9. Click [FINISH] to exit the setup wizard.

### 3 Calibrating the Touch Screen

1. Ensure that the touch screen is plugged into the USB port.
2. Run the utility via the Taskbar START > ALL PROGRAMS > NEXTWINDOW and opening the NextWindow folder. Select the CALIBRATION UTILITY from the folder.

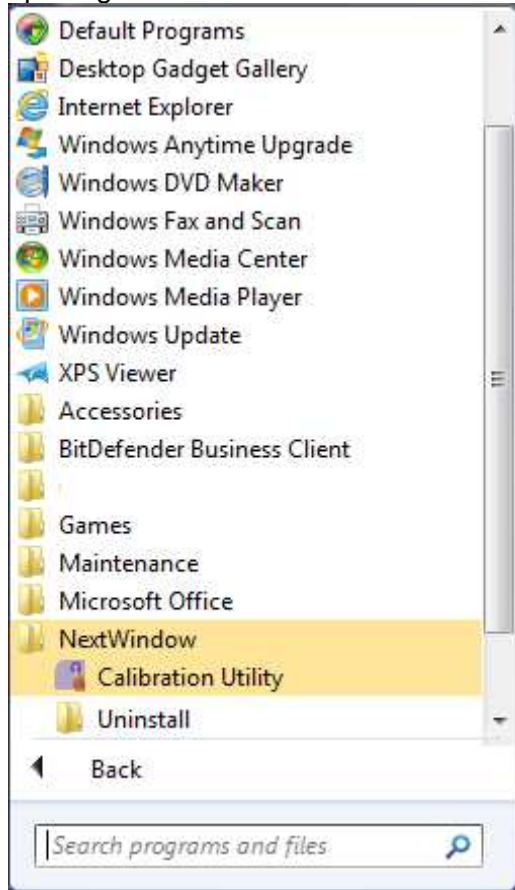


Figure 8. Opening the Calibration Utility from the Taskbar

3. The following window will be displayed.

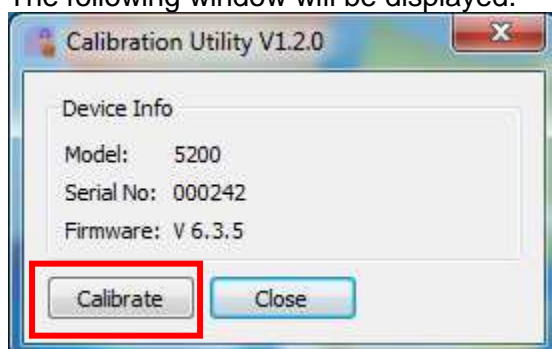


Figure 9. Run the calibration Utility Start Window.

Note that the calibration utility displays the model, serial number and firmware version of the connected touch screen

**NOTE:** The Version number and the Firmware version may be different to the software installed on your computer.

4. Click [CALIBRATE] to begin touch screen calibration

The computer will display the following screen – it includes instructions to assist in calibrating the screen and shows a cross in the upper left corner.

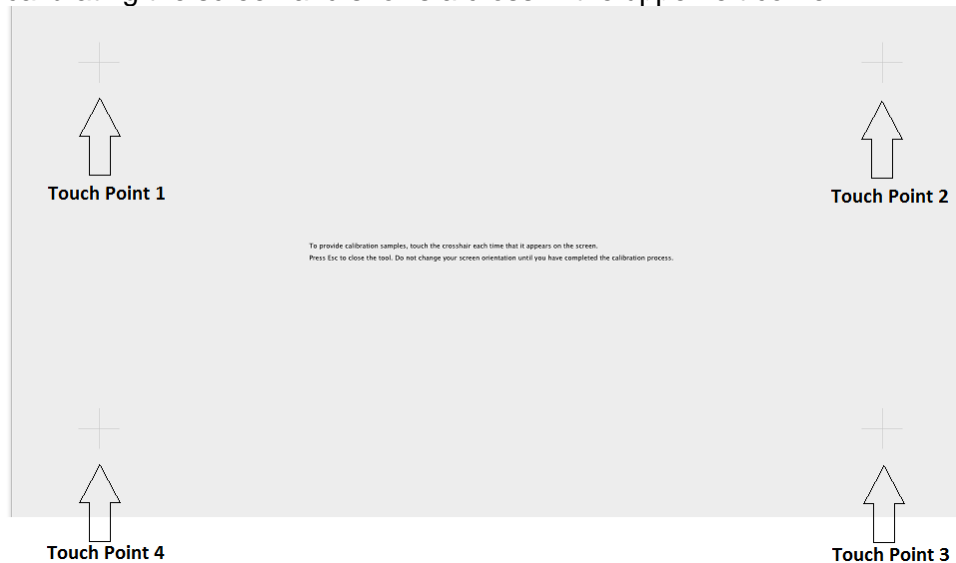
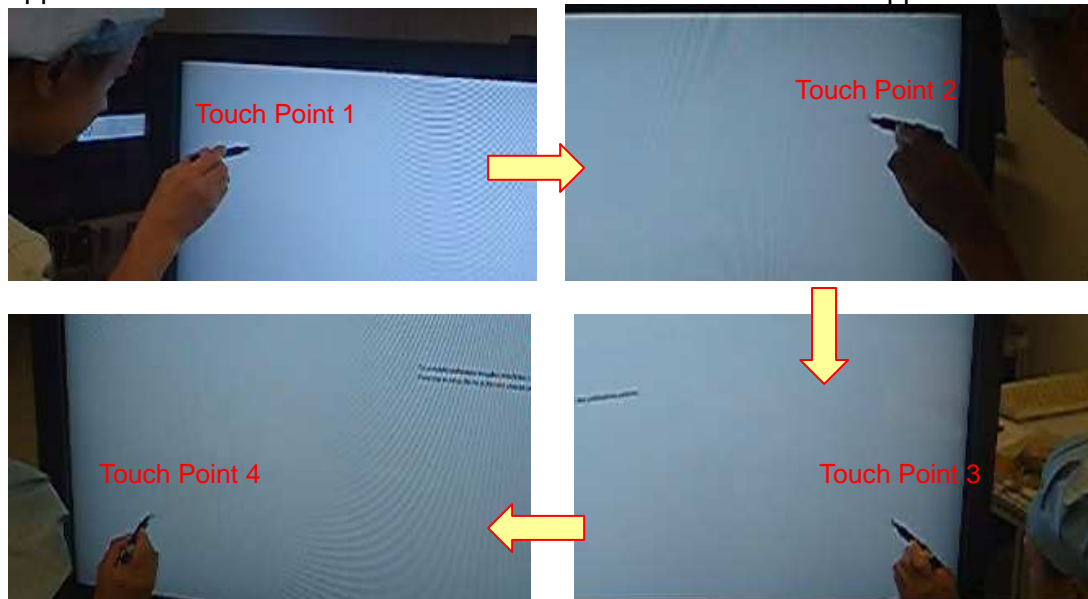


Figure 10. Calibration screen showing calibration points

5. Touch the cross displayed in the upper left hand corner with a finger, stylus etc  
The calibration Utility will record the relevant information and three other crosses will appear in the corners of the screen in turn. Touch each cross as it appears.



6. Once the Calibration Utility has captured the positions of the pointers on the screen, it will close down and the unit is ready to operate in touch screen mode. Click on “Close” to close calibration utility.

